

*Santa Cruz Center for
International Economics*
(University of California, Santa Cruz)

Year 2005

Paper 05'11

International Reserves: Precautionary
versus Mercantilist Views, Theory and
Evidence

Joshua Aizenman *

JAEWOO LEE †

*University of California, Santa Cruz

†

This paper is posted at the eScholarship Repository, University of California.

<http://repositories.cdlib.org/sccie/05-11>

Copyright ©2005 by the authors.

International Reserves: Precautionary versus Mercantilist Views, Theory and Evidence

Abstract

This paper tests the importance of precautionary and mercantilist motives in accounting for the hoarding of international reserves by developing countries, and provides a model that quantifies the welfare gains from optimal management of international reserves. While the variables associated with the mercantilist motive are statistically significant, their economic importance in accounting for reserve hoarding is close to zero and is dwarfed by other variables. Overall, the empirical results are in line with the precautionary demand. The effects of financial crises have been localized, increasing reserve hoarding in the aftermath of crises mostly in countries located in the affected region, but not in other regions. We also investigate the micro foundation of precautionary demand, extending Diamond and Dybvig (1983)'s model to an open, emerging market economy where banks finance long-term projects with short-term deposits. We identify circumstances that lead to large precautionary demand for international reserves, providing self-insurance against the adverse output effects of sudden stop and capital flight shocks. This would be the case if premature liquidation of long-term projects is costly, and the economy is de-facto integrated with the global financial system, hence sudden stops and capital flight may reduce deposits sharply. We show that the welfare gain from the optimal management of international reserves is of a first-order magnitude, reducing the welfare cost of liquidity shocks from a first-order to a second-order magnitude.

May 2005

**International Reserves:
Precautionary versus Mercantilist Views, Theory and Evidence***

by
Joshua Aizenman and Jaewoo Lee

Abstract

This paper tests the importance of precautionary and mercantilist motives in accounting for the hoarding of international reserves by developing countries, and provides a model that quantifies the welfare gains from optimal management of international reserves. While the variables associated with the mercantilist motive are statistically significant, their economic importance in accounting for reserve hoarding is close to zero and is dwarfed by other variables. Overall, the empirical results are in line with the precautionary demand. The effects of financial crises have been localized, increasing reserve hoarding in the aftermath of crises mostly in countries located in the affected region, but not in other regions. We also investigate the micro foundation of precautionary demand, extending Diamond and Dybvig (1983)'s model to an open, emerging market economy where banks finance long-term projects with short-term deposits. We identify circumstances that lead to large precautionary demand for international reserves, providing self-insurance against the adverse output effects of sudden stop and capital flight shocks. This would be the case if premature liquidation of long-term projects is costly, and the economy is de-facto integrated with the global financial system, hence sudden stops and capital flight may reduce deposits sharply. We show that the welfare gain from the optimal management of international reserves is of a *first-order* magnitude, reducing the welfare cost of liquidity shocks from a *first-order* to a *second-order* magnitude.

Joshua Aizenman
Economics Department and the NBER
University of California, Santa Cruz
Santa Cruz, CA 95064
jaizen@ucsc.edu

Jaewoo Lee
Research Department
International Monetary Fund
Washington DC, 20431
JLEE3@imf.org

Keywords: International Reserves, Precautionary Demand, mercantilist, financial crises
JEL specification: F15, F31, F43

* We thank Hali Edison for sharing the data, and Aleksandra Markovic for research assistance in the earlier phase of the project. The views expressed in this paper are those of the authors and do not necessarily represent those of the IMF or IMF policy.

1. Introduction and summary

This paper has two goals: quantifying the relative importance of alternative views explaining international reserves accumulation, and modeling precautionary demand for international reserves, viewing it as self-insurance against costly output contractions induced by sudden stops and capital flight. This model is used to provide welfare evaluation of the costs and benefits of hoarding reserves, and the optimal size of precautionary demand.

The 1997-8 crisis in East Asia led to profound changes in the demand for international reserves, increasing over time the hoarding. Several salient features of the 1997-8 crisis may provide clues to the changing attitude towards international reserves. First, the magnitude and speed of the reversal of capital flows throughout the 1997-8 crisis surprised most observers. While the 1994 Tequila crisis induced the market to expect similar crises in Latin America, most viewed East Asian countries as being less vulnerable to the perils associated with “hot money.”¹ This presumption followed from the prevalent pre-1997 view -- East Asian countries were more open to international trade, had sounder overall fiscal policies, and had stronger growth performance than Latin American countries. In retrospect, the crisis exposed hidden vulnerabilities of East Asian countries, forcing the market to update the probability of sudden stops affecting all countries. The crisis also led to sharp output and investment contractions, credit crunches, and—in several countries—to full-blown banking crises.² Finally, most affected countries went through tough adjustments, reversing the output contraction and resuming growth within several years. While a few countries flirted with capital controls, within two to three years most countries retained or increased their financial integration.

The above observations suggest that hoarding international reserves can be viewed as a precautionary adjustment, reflecting the desire for self-insurance against exposure to future sudden stops. This view, however, faces a well-known contender in a modern incarnation of mercantilism: international reserves accumulations triggered by concerns about export competitiveness. This explanation has been advanced by Dooley, Folkerts-Landau and Garber (2003), especially in the context of China. They interpret reserves accumulation as a by-product

¹ See Calvo (1998), Calvo and Mendoza (2000) and Edwards (2004) for further discussion on sudden stops of short-term capital flows.

² See Kaminsky and Reinhart (1999) and Hutchison and Noy (2002) for further discussion on the output costs associated with sudden stops.

of promoting exports, which is needed to create better jobs, thereby absorbing abundant labor in traditional sectors, mostly in agriculture. Under this strategy, reserves accumulation may facilitate export growth by preventing or slowing appreciation. Some view the modern mercantilist approach as a valid interpretation for most East Asian countries, arguing that they follow similar development strategies. This interpretation is intellectually intriguing, especially in the broader context of the “Revived Bretton Woods system,” yet it remains debatable. Some have pointed out that high export growth is not the new kid on the block -- it is the story of East-Asia during the last fifty years. Yet, the large increase in hoarding reserves has happened mostly after 1997. This issue is of more than academic importance: the precautionary approach links reserves accumulation directly to exposure to sudden stops, capital flight and volatility, whereas the mercantilist approach views reserves accumulation as a residual of an industrial policy, a policy that may impose negative externalities on other trading partners.

Our empirical test augments previous econometric specifications of international reserves by adding two sets of variables. The first set deals with factors associated with mercantilist motives: lagged export growth and deviations from predicted purchasing power parity (PPP). The second set of variables attempts to capture precautionary adjustment in the aftermath of unanticipated sudden-stop crises, using dummy variables. Specifically, two crucial events were the 1994 Mexican crisis and the 1997 East Asian crisis. Both happened at times of greater financial integration, promoted by relaxing capital controls. Our results provide only a limited support for the mercantilist approach. While the variables associated with the mercantilist motive are statistically significant, their economic importance in accounting for reserves hoarding is close to zero and is dwarfed by other variables. Specifically, trade openness, measured by the GDP share of imports, and crises variables are playing a much more important role in accounting for reserves accumulation than lagged export growth and PPP deviations. This result applies to all countries, including China. Indeed, inspecting the magnitude of country-specific dummies reveals that China is not an outlier in the level of reserves. We also find strong localized effects of crises: while the 1994 Mexican crises increased reserves in Mexico, it did not affect reserves in East Asia. Similarly, the 1997 crisis strongly increased the hoarding of reserves in East Asia, but not in Latin America.

Overall, the empirical results of Section 2 are in line with the precautionary demand. Yet, the precautionary demand approach has not been endorsed uniformly. Skeptical views point

out that the sheer magnitude of reserves accumulated by East Asian countries seems excessive once attention is paid to the opportunity costs of reserves. In order to deal with these concerns, we provide in Section 3 a simple model characterizing and quantifying the welfare gains attributed to hoarding reserves in the presence of exposure to external liquidity shocks. The model extends the literature dealing with the demand for bank reserves in the closed economy to the important, yet less studied open-economy context.³ Specifically, we consider a country exposed to international liquidity shocks, which in turn can cause liquidation and consolidation of investment. A key postulate of the analysis is that, short of having a credible international lender of last resort, hoarding international reserves is among the few options allowing developing countries to reduce the output costs of sudden stops. While hoarding international reserves has its opportunity cost, we identify circumstances where the welfare gain from hoarding reserves is of a first-order magnitude, leading to potentially large precautionary demand for reserves.

The earlier literature focused on using international reserves as part of the management of an adjustable-peg or managed-floating exchange rate regime [Frenkel (1983), Edwards (1983); see Flood and Marion (2001) for a literature review]. To our knowledge, our paper is the first econometric attempt to evaluate the relevance of the mercantilist approach in the aftermath of the 1997 crisis [see Aizenman and Marion (2003); Edison (2003); and Aizenman, Lee and Rhee (2004) for earlier empirical analysis of related issues]. The model advanced in Section 3 contributes to the growing literature linking international reserves with sovereign risk and limited access to the global capital market. Past literature has considered precautionary motives for hoarding international reserves needed to stabilize fiscal expenditure in countries with limited taxing capacity and sovereign risk [see Aizenman and Marion (2004)].⁴ Insurance perspectives of international reserves applying the option pricing theory are provided in Lee (2004). The

³ See Bryant (1980); Diamond and Dybvig (1983) and Prisman, Solvin and Sushka (1986) for earlier literature dealing with optimal reserves (liquidity) policy in a closed economy.

⁴ The precautionary demand modeled in this paper supplements the precautionary demand stemming from fiscal considerations. For example, one may argue that the prospect of unification of North and South Korea may explain part of the hoarding of international reserves by Korea. Yet, we may qualify this argument by noting that one expects the US and the OECD countries to provide the credit needed to finance the unification. This argument, however, does not extend to the case of a sudden stop and capital flight. As the 1997 crisis illustrated, external finance at times of sudden stops is not forthcoming without stringent conditions and is frequently limited due to moral hazard considerations.

model in this paper is more closely related to the literature viewing international reserves as output stabilizers [see Ben-Bassat and Gottlieb (1992), Aizenman, Lee and Rhee (2004) and García and Soto (2004)]. Our paper adds to this literature by providing an explicit model of financial intermediation and adjustment subject to liquidity shocks, where hoarding international reserves emerges as part of the optimal financial intermediation.

As our focus is on developing countries, we assume that all financial intermediation is done by banks, relying on debt contracts. Specifically, we consider the case where investment in a long-term project should be undertaken prior to the realization of liquidity shocks. Hence, shocks may force costly liquidation of earlier investments, thereby reducing output. We solve the optimal demand for deposits and international reserves by a bank that finances investment in long-term projects. The bank's financing is done using callable foreign deposits, which exposes the bank to liquidity risk. Macro liquidity shocks stemming from sudden stops and capital flights cannot be diversified away.⁵ In these circumstances, hoarding reserves saves liquidation costs, potentially leading to large welfare gains, and these gains hold even if all agents are risk neutral. In this framework, deposits and reserves are complements – higher volatility of liquidity shocks will increase both the demand for reserves and deposits. The optimal hoarding of reserves to accommodate more volatile liquidity shocks reduces the output cost of these shocks from *first-order* to *second-order* magnitude.

2. International Reserves: Evidence

Our empirical analysis adds several new controls to past regressions. The mercantilist view focuses on hoarding international reserves in order to prevent or mitigate appreciation, with the ultimate goal of increasing export growth. Hence, we expect that reserves hoarding provoked by mercantilist concerns should be associated with higher export growth rate, and with depreciated real exchange rate relative to the fundamental PPP real exchange rate. In order to control for export growth, we constructed a three-year moving average of the growth rate of real exports (denoted MVGX), lagged two years in the regression.⁶ The deviations from the

⁵ The recent history of Argentina provided a vivid illustration of the limited ability to diversify away liquidity shocks. In the mid-1990s Argentina negotiated contingent commercial credit lines in an attempt to provide external insurance against liquidity shocks. These lines, however, dried up as Argentina approached the crisis.

⁶ We used lags to deal with possible endogeneity issues.

“fundamental” PPP value, denoted by PLDE, are measured by the residuals from the regression of national price levels on the per-worker income relative to the U.S. (see the regression reported in Table 1A). The coefficient on this variable will be positive, if a country whose price level is higher than the level implied by its relative income tends to accumulate international reserves in an effort to slow the pace of appreciation in its currency.⁷

The second set of controls attempts to capture the effects of two important crises: the 1994 Mexican, and the 1997-8 East-Asian crises. This is done by applying a dummy variable to each crisis [CRMEXEM: 1 since 1995, 0 before; CRASIAEM: 1 since 1998, 0 before]. In one of the regressions we apply continental dummies for each crisis (see data appendix for definitions). In addition, we control for log of population (LPOP), log of per-capita income (LYPC); log of percent import share (LIMY); and exchange rate volatility (VOL_XC). Various permutations of these regressions are summarized in Tables 1 and 2, covering 1980-2000. Figures 1 and 2 summarize the contribution of the various variables in regression III to the dependent variable in the 1990s, for six countries [Argentina, Brazil, Chile, China, Korea, and Mexico].

The dependent variable in Table 1 is the reserves/broad money ratio. Higher lagged export growth and national price level above the fundamental level predicted by relative GDP per capita regression are associated with higher reserves/broad money, and this effect is statistically significant. Similarly, the Mexican and the East-Asian crises increased the demand for reserves, and this effect is statistically significant. Figure 1 allows one to inspect the economic significance of each variable in accounting for the observed reserves ratios for six countries. Similar pattern applies to all the countries: trade openness is frequently the most important consideration. The variables associated with mercantile concerns are practically flat, and their economic significance in accounting for the observed hoarding of international reserves is close to zero. The crises variables play an important role in all the six countries, including China. The regional crisis dummy variables used in regression IV reveal an intriguing pattern -- the Mexican crisis is associated with higher demand for reserves in Latin America, but not in Asia. Similarly, the 1997 East-Asian crisis is associated with higher hoarding of reserves in Asia, but lower reserves in Latin America [a drop of 5 percentage points in the aftermath of the 1997 crisis]. Regression V reveals that the size of the variables associated with mercantile

⁷ In an auxiliary regression, also reported in Table 1A, it is found that lagged values of PLDE brings about an appreciation in the nominal effective exchange rates in the subsequent year.

concerns is not impacted by crises, hence it rejects the possibility that crises magnified mercantilist concerns.

The dependent variable in Table 2 is the reserves/GDP ratio. Overall, the results are very similar to the one associated with reserves/broad money. The main changes are that the impact of crises is sharper on reserves/GDP than on reserves/broad money. Figure 2 summarizes the economic significance of each variable in accounting for the observed reserves ratios for six countries. It reveals similar patterns to Figure 1. Note that in the case of China, reserves/GDP ratio increased mostly after 1994, from 0.08 to about 0.16 in 1998-2000. The most important variable “explaining” the reserves/GDP ratio is trade openness (about 0.1), and the crises dummies (about 0.05). All the other variables provide practically zero explanation to reserves/GDP [see Prasad and Wei (2005) for recent skeptical perspectives about the mercantilist interpretation of Chinese reserves accumulation].

Figure 3 provides the distribution of the country specific effects, identifying the names of the six countries evaluated in Figures 1-2 and several others with country specific effects that differ from the average of all country specific effects by nearly or more than two standard deviations. Note that China’s country specific effect is negative, and is inconsistent with the notion that China’s large reserves make it an outlier in the context of the cross country panel comparison, 1980-2000. For both China and India, the clear negative values of country specific effects reflect the large sizes of their population. In regressions that excluded the population variable from the regressors, the country specific effects on China and India were less negative than in the regressions with population, and thus were closer to the average value of country specific effects. With or without considering the effect of population, China is not an outlier with a large positive country-specific effect. One such country is Singapore, a country well known for its traditionally very high level of international reserves that often exceeded 80 percent of its GDP during the sample period, and its country-specific effect is close to three standard deviations. Two countries with smaller but still large country-specific effect—about two standard deviations away from the average—are Cyprus and Hong Kong SAR, in the latter of which the currency board system necessitates a high level of reserves.

3. The model

We construct a minimal model to explain the self insurance offered by international reserves in mitigating the output effects of liquidity shocks. The structure of the model is akin to Diamond and Dybvig (1983) -- investment in a long term project should be undertaken prior to the realization of liquidity shocks. Hence, the liquidity shock may force costly liquidation of the earlier investment, reducing second period output. As our focus is on developing countries, we assume that all financial intermediation is done by banks, relying on a debt contract. We simplify further by assuming that there is no separation between the bank and the entrepreneur -- the entrepreneur is the bank owner, using it to finance the investment. The time line is summarized in Figure 4. At the beginning of period 1, risk neutral agents deposit D in banks, which in turn use D to finance long term investment, K_1 , and hoarding reserves, R . A liquidity shock, with the aggregate value of Z for the borrowing economy, materializes at the end of period 1, after the commitment of capital. A liquidity shock exceeding reserves induces a premature liquidation of $Z - R$. Output increases with the capital invested at the beginning period one, K_1 , and declines with liquidation at a rate that depends on the adjustment cost, θ . Assuming a Cobb-Douglas production function, the second period output is

$$(1) \quad Y_2 = [K_1 - (1 + \theta) \text{MAX}\{Z - R, 0\}]^\alpha; \quad \text{where } 0 \leq \theta < 1, \text{ and } \alpha < 1.$$

Recalling that $K_1 = D - R$, the net capital after liquidation is:

$$(2) \quad K_2 = \begin{cases} D - R - (1 + \theta)(Z - R) = D - Z - \theta(Z - R) & \text{if } Z > R \\ D - R & \text{if } Z \leq R \end{cases}$$

It is convenient to normalize the liquidity shock by the level of deposits, denoting the normalized shock by z :

$$(3) \quad Z = zD; \quad 0 \leq z < \tau \leq 1, \text{ and density } f(z) .$$

Depositors are entitled to a real return of r_D on the loan that remains deposited for the duration of investment.⁸ Assuming agents' subjective discount rate is ρ , competitive intermediation implies that

$$(4) \quad \int_0^{\tau} (1-z)f(z)dz = \frac{(1+r_D) \int_0^{\tau} (1-z)f(z)dz}{1+\rho} \Rightarrow r_D = \rho.$$

Net reserves held until period 2 are assumed to yield a return of r_f . We denote the marginal liquidity shock associated with liquidation by z^* , $z^* = R/D$. The expected second period surplus [i.e., net income after paying depositors] is:

$$(5) \quad E[\Pi] = \int_0^{z^*} (D-R)^\alpha f(z)dz + \int_{z^*}^{\tau} (D-Z - \theta[Z-R])^\alpha f(z)dz + \\ (1+r_f) \int_0^{z^*} [R-Z]f(z)dz - (1+\rho)D \int_0^{\tau} (1-z)f(z)dz.$$

It is the sum of the expected output, plus the income associated with reserves net of liquidation, minus the repayment to depositors who get a return of ρ on the net deposit position, $D-Z$.

Applying (3) and the definition of the z^* , we re-write the expected surplus as

$$(5') \quad E[\Pi] = D^\alpha \left[\int_0^{z^*} (1-z^*)^\alpha f(z)dz + \int_{z^*}^{\tau} (1-z - \theta[z-z^*])^\alpha f(z)dz \right] + \\ D \left[(1+r_f) \int_0^{z^*} (z^*-z)f(z)dz - (1+\rho) \int_0^{\tau} (1-z)f(z)dz \right].$$

The FOC determining the optimal demand for international reserves is

⁸ The possibility that the outcome of investment is not large enough to meet the promised rate of return is discussed later. To preview, this possibility does not affect the main conclusion of our analysis, because of the assumption of risk neutrality.

$$(6) \quad 0 = D^{\alpha-1} \left[-\alpha(1-z^*)^{\alpha-1} \int_0^{z^*} f(z) dz + \theta \int_{z^*}^{\tau} \alpha(1-z-\theta[z-z^*])^{\alpha-1} f(z) dz \right] + (1+r_f) \int_0^{z^*} f(z) dz.$$

This condition is equivalent to:

$$(7) \quad [MP_{K_1} - (1+r_f)] \cdot \Pr[Z < R] = \theta E[MP_K | Z > R],$$

where MP_{K_1} is the marginal productivity of capital, and $\Pr[Z < R]$ is the probability that the liquidity shock is below the level of reserves. The expected opportunity cost of holding reserves is equalized to the expected precautionary benefit of holding reserves.

Figure 5 plots the final output (the solid line) as a function of liquidity shock, z , drawn for a given initial investment and reserves hoarding. For liquidity shocks below z^* , output is flat, independent of the realized liquidity shock. A liquidity shock above z^* requires costly downward adjustment of capital, reducing thereby final output. A marginal increase of the initial reserves position will shift the output line in two different directions. First, hoarding extra dollar reserves reduces the initial capital by one dollar, reducing output for liquidity shocks below z^* ; shifting the output line downward for $z < z^*$ (the downward shift equals MP_{K_1}). Extra dollar reserves implies, however, lower deadweight loss associated with liquidation, shifting thereby the output line to the right for $z > z^*$. The decrease in output associated with extra dollar reserves is depicted in Figure 5 by the shaded area below the old production curve, for $z < z^*$. Similarly, the increase in output associated with the extra dollar reserves correspond to the shaded area to the right of the old production curve, for $z > z^*$. The expected net gain in production from holding reserves corresponds to the difference between the two shaded areas, properly weighted by $f(z)$, as well as the expected gross income attributed to extra dollar reserves. Optimal reserves, which satisfy equation (7), maximize the overall expected gain.

The first order condition characterizing optimal deposit can be rewritten as:

$$(8) \quad 0 = \alpha D^{\alpha-1} \left[\int_0^{z^*} (1-z^*)^{\alpha-1} f(z) dz + \int_{z^*}^{\tau} (1-z-\theta[z-z^*])^{\alpha-1} (1-z[1+\theta]) f(z) dz \right] - \\ \left\{ (1+r_f) \int_0^{z^*} z f(z) dz + (1+\rho) \int_0^{\tau} (1-z) f(z) dz \right\}$$

We first consider the case with small shocks to gain the basic insight for the welfare gains associated with reserves. In the absence of uncertainty, the optimal level of deposits (D_0^*), and the resultant surplus (Π_0) are:

$$(8') \quad D_0^* = \left[\frac{\alpha}{1+\rho} \right]^{1/(1-\alpha)} ; \quad \Pi_0 = (1+\rho) D_0^* \frac{1-\alpha}{\alpha}.$$

Suppose that the liquidity shocks are either zero or z_0 , with probability half each, and $\rho = r_f$. If reserves are set to zero, and deposits at D_0^* , the expected surplus is

$$(9) \quad E[\Pi]_{R=0} = \frac{[D_0^*]^{\alpha} - (1+\rho) D_0^*}{2} + \frac{[D_0^*(1-(1+\theta)z_0)]^{\alpha} - (1+\rho) D_0^*(1-z_0)}{2}.$$

Applying (8') to (9), the first order approximation of the expected surplus can be reduced to

$$(9') \quad E[\Pi]_{R=0} \cong \Pi_0 - \theta \frac{z_0 (1+\rho) D_0^*}{2}.$$

Liquidity shocks have a first order adverse effect on expected surplus. In the absence of the insurance provided by reserves, liquidation induces a deadweight loss equal to the adjustment cost, θ , times the expected liquidation. This result is not affected if we allow the optimal

adjustment of deposits: the envelope theorem implies that such an adjustment would have only second order effects.⁹

In a two states of nature case, perfect stabilization can be achieved by hoarding reserves equal to the liquidity shock: $R = z_0 D_0^*$; adjusting deposits to $D = (1 + z_0) D_0^*$, thereby setting the stock of capital at $K_1 = D_0^*$. If the liquidity shock materializes, R would provide the needed liquidity, preventing costly output adjust. If the shock is nil, there would no need to use R. The assumption that $\rho = r_f$ implies that the cost of this insurance is zero. Consequently,¹⁰

$$(9'') \quad E[\Pi]_{|R=z_0 D_0^*} = \Pi_0$$

This simple example suggests that liquidity shocks have a first order welfare effects in the absence of reserves, and that hoarding reserves can reduce the cost of liquidity shocks from first to second order magnitude. We confirm this conjecture by a detailed simulation of the case where liquidity shocks follow a uniform distribution, $f(z) = 1/\lambda$; $\lambda = \tau < 1$. Figure 6 plots the association between volatility and the reserves/deposit ratio for the case where the level of deposit is kept at the level of equation (8'). The reserves ratio increases with the volatility. Allowing for the optimal adjustment of D according to equation (8), it follows that

$$\frac{dD}{dR} \Big|_{R=0} > 0. \quad \text{The increase in D is needed to mitigate the costly drop in output induced by}$$

reserves accumulation, and is needed to keep the planned capital at the optimal level.¹¹ Table 3 traces the impact of higher volatility for the case where both reserves and deposits are adjusting optimally, contrasting it to the case where reserves are set to zero [the last two columns].

⁹ This follows from the observation that $\frac{d E[\Pi]_{|R=0}}{d z_0} \cong \frac{\partial E[\Pi]_{|R=0}}{\partial D} \frac{d D}{d z_0} + \frac{\partial E[\Pi]_{|R=0}}{\partial z_0} = \frac{\partial E[\Pi]_{|R=0}}{\partial z_0}$ (recall

that the FOC determining deposits is $\frac{\partial E[\Pi]_{|R=0}}{\partial D} = 0$).

¹⁰ With more than two states of nature, R would be preset at the ex-ante efficient level, providing full insurance for liquidity shocks below z^* , and partial insurance above. While there is no way to insure complete stabilization, one expects large welfare gain from setting R at the ex-ante efficient level relative to the case of $R = 0$.

¹¹ Recalling (2), higher R reduces the stock of capital in states of nature where $Z < R$ by ΔR , but increases the stock of capital in states of nature where $Z > R$ by $\theta \Delta R$.

Specifically, the first four columns report the optimal reserves/deposit ratio, deposits, reserves and expected surplus as a function of volatility, assuming that R and D are adjusted optimally. The last two columns report D and expected surplus for case where R is zero, and only D is adjusted optimally.

Discussion:

In the absence of reserves, the volatility has first order effects on output: increasing volatility from zero to 0.6 reduces expected surplus by about 15%. Hoarding the optimal level of reserves reduces the cost of volatility into a second order magnitude, about 3%. Hence, optimal reserves have a first order welfare effect, increasing the expected surplus by about 12% relative to the case of zero reserves. Accomplishing this gain requires relatively large reserves, about half of the deposit level for the case where $\lambda = 0.6$. The effect of volatility with optimal reserves hoarding is to increase both deposits and reserves, while keeping the level of planned capital K_1 almost constant.

Our discussion assumed so far that the limited liability constraint does not bind: that is,

$$(10) \quad D^\alpha (1 - z - \theta[z - z^*])^\alpha > D(1 + \rho)(1 - z) \quad \text{for all } z .$$

Indeed, it can be verified that the limited liability constraint is not binding in the simulation reported in Table 3. We now show that our main results are not dependent on these parametric assumptions. The limited liability constraint would bind if

$D^\alpha (1 - z - \theta[z - z^*])^\alpha < D(1 + \rho)(1 - z)$ in some states of nature, which may hold for large enough volatility and adjustment cost. We denote the contractual interest rate on deposits in the presence of binding liability constraint by ρ_d , and by \tilde{z} the threshold liquidity shock associated with zero surplus:¹²

¹² Note that for $\frac{1 + \theta z^*}{1 + \theta} = z$, output is zero, and the bank would default. Hence, a sufficient condition for the limited liability constraint to bind is $\frac{1 + \theta z^*}{1 + \theta} < \lambda$. Equation (11) implies, however, that $\tilde{z} < \lambda$, and the limited liability constraint may bind even if $\frac{1 + \theta z^*}{1 + \theta} > \lambda$.

$$(11) \quad D^\alpha (1 - \tilde{z} - \theta[\tilde{z} - z^*])^\alpha = D(1 + \rho_d)(1 - \tilde{z}).$$

For liquidity shocks above this threshold, we assume that depositors are paid a fraction ϕ of the output, $0 \leq \phi \leq 1$.¹³ Note that binding limited liability constraint implies that depositors are exposed to the downside risk associated with large liquidity shock. Hence, depositors would demand a high enough deposit interest rate ρ_d to compensate for the exposure. For risk neutral depositors, the equilibrium interest rate is determined by the following brake even condition:

$$(12) \quad (1 + \rho) D \int_0^\tau (1 - z) f(z) dz = (1 + \rho_d) D \int_0^{\tilde{z}} (1 - z) f(z) dz + \phi \int_{\tilde{z}}^\tau (D(1 - z - \theta[z - z^*])^\alpha f(z) dz$$

where the threshold \tilde{z} is determined by (11). Consequently, the expected surplus is:

$$(13) \quad \begin{aligned} E[\Pi] &= D^\alpha \left[\int_0^{z^*} (1 - z^*)^\alpha f(z) dz + \int_{z^*}^{\tilde{z}} (1 - z - \theta[z - z^*])^\alpha f(z) dz \right] - (1 + \rho_d) D \int_0^{\tilde{z}} (1 - z) f(z) dz + \\ & (1 - \phi) \int_{\tilde{z}}^\tau (D(1 - z - \theta[z - z^*])^\alpha f(z) dz + D(1 + r_f) \int_0^{z^*} (z^* - z) f(z) dz = \\ & D^\alpha \left[\int_0^{z^*} (1 - z^*)^\alpha f(z) dz + \int_{z^*}^\tau (1 - z - \theta[z - z^*])^\alpha f(z) dz \right] + \\ & D \left[(1 + r_f) \int_0^{z^*} (z^* - z) f(z) dz - (1 + \rho) \int_0^\tau (1 - z) f(z) dz \right]. \end{aligned}$$

Note that (13) is *identical* to the expected surplus in the base case of the previous section, (5').

With risk neutral agents, binding limited liability constraint changes the deposit interest rate, without changing the entrepreneur's expected surplus and investment patterns.¹⁴

¹³ The conventional closed-economy assumption is $\phi = 1$. The case where $\phi < 1$ can capture the presence of repatriation risk, where the banks pays foreign creditors only a fraction ϕ of output for $z > \tilde{z}$, or the efficiency loss associated with debt restructuring.

¹⁴ This result holds because we assumed the absence of enforcement and monitoring costs, and that all agents are risk neutral.

4. **Concluding remarks**

Our study has outlined a procedure that helps to identify the contributions of precautionary and mercantilist motives to the hoarding of international reserves. Applying it to 1980-2000, we found that variables associated with trade openness and exposure to financial crises are both statistically and economically important in explaining reserves. In contrast, variables associated with mercantilist concerns are statistically significant, but economically insignificant in accounting for the patterns of hoarding reserves. These results hold for most countries, including China. We provided a model that shows that precautionary demand is consistent with high levels of reserves. We close the paper with qualifying remarks. As is the case with all empirical studies, more accurate and updated data may modify the results. Our empirical study does not imply that the hoarding of reserves by countries is optimal or efficient. Making inferences regarding efficiency would require having a detailed model and much more information, including an assessment of the probability and output costs of sudden stops, and the opportunity cost of reserves. Our study reveals, however, that existing patterns of growing trade openness and greater exposure to financial shocks by emerging markets go a long way towards accounting for the observed hoarding of international reserves.

References

- Aizenman, J. and N. P. Marion (2003). "The High Demand for International Reserves in the Far East: What's Going On?" *Journal of the Japanese and International Economies*, 2003, 17/3, 370-400.
- _____ (2004). "International Reserves Holdings with Sovereign Risk and Costly Tax Collection," *Economic Journal*, vol. 114, (July), pp. 569-91
- Aizenman, J., Y. Lee, and Y. Rhee (2004). "International reserves management and capital mobility in a volatile world: Policy considerations and a case study of Korea," NBER Working paper # 10534.
- Ben-Bassat A. and D. Gottlieb (1992). 'Optimal international reserves and sovereign risk,' *Journal of International Economics*, vol. 33, pp. 345-362.
- Bryant, R. (1980), "A Model of Reserves, Bank Runs, and Deposit Insurance," *Journal of Banking and Finance* 4, pp.335-344.
- Calvo, G. (1998), "Capital Flows and Capital-Market Crises: The Simple Economics of Sudden Stops," *Journal of Applied Economics*, November 1998.
- _____ and E. Mendoza. (2000) "Contagion, Globalization, and the Volatility of Capital Flows," in Sebastian Edwards (editor) *Capital Flows and the Emerging Economies*, Chicago, University Chicago Press, 2000.
- Diamond, D. and P. Dybvig (1983). "Bank Runs, Liquidity and Deposit Insurance," *Journal of Political Economy* 91, pp. 401-419.
- Dooley, M., D. Folkerts-Landau and P. Garber. (2003), "An Essay on the Revived Bretton Woods System," NBER Working paper # 9971.
- Edison, H. (2003), "Are Foreign Exchange Reserves in Asia Too High?" in IMF *World Economic Outlook September 2003*.
- Edwards, S. (1983). "The Demand for International Reserves and Exchange Rate Adjustments: The Case of LDCs, 1964-1972," *Economica*, vol. 50, pp. 269-280.
- _____ (2004). "Thirty Years of Current Account Imbalances, Current Account Reversals, and Sudden Stops", *IMF Staff Papers*, Vol. 51, Special Issue.

- Flood, R. and P. N. Marion (2001). 'Holding International Reserves in an Era of High Capital Mobility,' in Collins S. M. and Rodrik D., Editors, *Brookings Trade Forum 2001*, Washington, D.C. : Brookings Institution Press, 2002.
- García P. S. and C. G. Soto (2004), "Large Hoarding of International Reserves: Are they worth it?," manuscript, Chilean Central Bank.
- Hutchison M. and I. Noy (2002). "How Bad Are Twins? Output Costs of Currency and Banking Crises," forthcoming, *Journal of Money, Credit and Banking*.
- Kaminsky, G. and C. Reinhart (1999). "The Twin Crises. The Causes of Banking and Balance-of-Payments Problems," *American Economic Review*, 89, June, pp. 473-500.
- Lee, J. (2004). "Insurance Value of International Reserves," IMF Working Paper 04/175.
- Prasad, E. and S-J Wei (2005). "The Chinese approach to capital inflows: patterns and possible explanations," IMF Working Paper 05/79.
- Prisman, E. , M. Solvin and M. Sushka (1986). "A general model of the banking firm under conditions of monopoly, uncertainty and recourse," *Journal of Monetary Economics* 17 (2): 293-304.

DATA Appendix: Definitions of the regression variables

Reserves: international reserves holdings minus gold, measured in U.S. dollars.

R to M: ratio of reserves to the dollar value of broad money.

R to Y: ratio of reserves to the dollar value of nominal GDP.

LPOP: log of population

LYPC: log of per-capita income

LIMY: log of percent import share

MVGX: three-year moving average of the growth rate of real exports (log change), lagged two years in the regression.

VOL_XC: exchange rate volatility, calculated from the monthly exchange rate against the U.S. dollar.

PLDE: the residuals from the regression of national price levels (measured in U.S. dollars) on the per-worker income relative to the U.S. (Table 1A) Time dummies for each year were used to control for time-specific common factors including the unit of denomination.)

CRMEXEM: dummy variable for the period after the Mexico crisis, applied to developing and emerging market countries.

CRASIAEM: dummy variable for the period after the Asian crisis, applied to developing and emerging market countries.

CRMEXEMLA: dummy variable CRMEXEM, applied only to Latin America

CRMEXEMAS: dummy variable CRMEXEM, applied only to Asia

CRASIAEMLA: dummy variable CRASIAEM, applied only to Latin America

CRASIAEMAS: dummy variable CRASIAEM, applied only to Asia

Regressions of Table 1 and Table 2 all include country-specific constant terms. The sample comprises 53 countries that include advanced and emerging-market economies as well as several major developing economies. They are Australia, Austria, Belgium, Canada, Cyprus, Denmark, Finland, France, Germany, Greece, Iceland, Ireland, Italy, Japan, Luxembourg, Netherlands, New Zealand, Norway, Portugal, Spain, Sweden, Switzerland, United Kingdom, United States, Hong Kong SAR, Israel, Korea, Singapore, Taiwan Province of China, Argentina, Brazil, Chile, Colombia, Czech Republic, Hungary, Indonesia, Malaysia, Mexico, Pakistan, Peru, Philippines, Poland, Russia, South Africa, Thailand, Turkey, Venezuela, Algeria, China, Croatia, Egypt, India, and Morocco. Owing to data availability, Greece is excluded from the regressions for Table 1, and Luxembourg, Egypt, and Taiwan Province of China are excluded from the regressions that include price level data.

Table 1. Reserves to Broad Money
(1980-2000)

	I	II	III	IV	V
LPOP	0.281 *** (0.035)	0.183 *** (0.038)	0.022 (0.044)	0.137 *** (0.043)	0.021 (0.044)
LYPC	-0.103 *** (0.017)	-0.090 *** (0.019)	-0.090 *** (0.018)	-0.084 *** (0.019)	-0.092 *** (0.019)
LIMY	0.128 *** (0.015)	0.144 *** (0.017)	0.105 *** (0.017)	0.135 *** (0.017)	0.105 *** (0.017)
VOL_XC	-0.005 *** (0.001)	-0.004 *** (0.001)	-0.004 *** (0.001)	-0.004 *** (0.001)	-0.004 *** (0.001)
MVGX		0.169 ** (0.059)	0.159 ** (0.058)	0.197 *** (0.059)	0.169 *** (0.059)
PLDE		0.060 *** (0.015)	0.042 ** (0.015)	0.059 *** (0.015)	0.046 *** (0.015)
CRMEXEM			0.064 *** (0.012)		0.063 *** (0.012)
CRASIAEM			0.027 ** (0.012)		0.022 * (0.013)
CRMEXEMAS				-0.027 (0.020)	
CRMEXEMLA				0.065 *** (0.020)	
CRASIAEMAS				0.079 *** (0.024)	
CRASIAEMLA				-0.055 ** (0.024)	
MVGX*CRASIAEMAS					-0.105 (0.302)
PLDE*CRASIAEMAS					-0.056 (0.057)
R squared	0.774	0.783	0.795	0.788	0.795
Cross-section	52	49	49	49	49

Statistically significant at 1 percent (***), 5 percent (**), and 10 percent (*).
All regressions included country fixed effects.

Table 1A. Auxiliary Regressions

Dependent Variable:
National Price Level

Variable	Coefficient
Constant	4.395 *** (0.015)
Relative GDP per worker	0.324 *** (0.008)

R-squared 0.439

Sample period 1980 to 2000

Cross section observations 149

Time dummies were included.

Statically significant at 1 percent (***)

Dependent Variable:

Log Change in the Nominal Effective Exchange Rate

Variable	Coefficient
PLDE(-1)	0.346 *** (0.098)
PLDE(-2)	-0.135 (0.097)

R-squared 0.392994

Sample period 1980 to 2000

Cross section observations 50

Country fixed effects were included.

PLDE refers to the residuals from the price-level regression

Table 2. Reserves to GDP
(1980-2000)

	I	II	III	IV	V
LPOP	0.232 *** (0.016)	0.181 *** (0.016)	0.099 *** (0.019)	0.169 *** (0.018)	0.095 *** (0.019)
LIMY	0.045 *** (0.008)	0.056 *** (0.008)	0.036 *** (0.008)	0.051 *** (0.008)	0.034 *** (0.008)
VOL_XC	-0.001 ** (0.000)	0.000 (0.000)	0.000 (0.000)	-0.001 * (0.000)	-0.001 * (0.000)
MVGX		-0.005 (0.028)	-0.010 (0.027)	0.024 (0.028)	-0.011 (0.027)
PLDE		0.024 *** (0.007)	0.016 ** (0.007)	0.033 *** (0.007)	0.020 ** (0.007)
CRMEXEM			0.022 *** (0.006)		0.022 *** (0.006)
CRASIAEM			0.031 *** (0.006)		0.025 *** (0.006)
CRMEXEMAS				-0.004 (0.010)	
CRMEXEMLA				-0.011 (0.009)	
CRASIAEMAS				0.054 *** (0.011)	
CRASIAEMLA				-0.016 (0.011)	
MVGX*CRASIAEMAS					0.222 (0.141)
PLDE*CRASIAEMAS					-0.026 (0.026)
R squared	0.880	0.896	0.903	0.894	0.904
Cross-section	53	50	50	50	50

Statistically significant at 1 percent (***), 5 percent (**), and 10 percent (*).
All regressions included country fixed effects.

Table 3: Volatility, reserves and expected surplus.

λ	$z^* = R/D$	D	R	$E[\Pi]$	$E[\Pi]_{R=0}$	$D_{R=0}$
0	0	0.15	0	0.35	0.35	0.15
0.2	0.15	0.17	0.026	0.35	0.34	0.16
0.4	0.3	0.2	0.06	0.345	0.325	0.17
0.6	0.46	0.26	0.12	0.34	0.3	0.18

The simulation values are $\alpha = 0.33$; $\theta = 0.5$; $\rho = 0.2$; $r_f = 0.02$.

Figure 1. Reserves to Broad Money

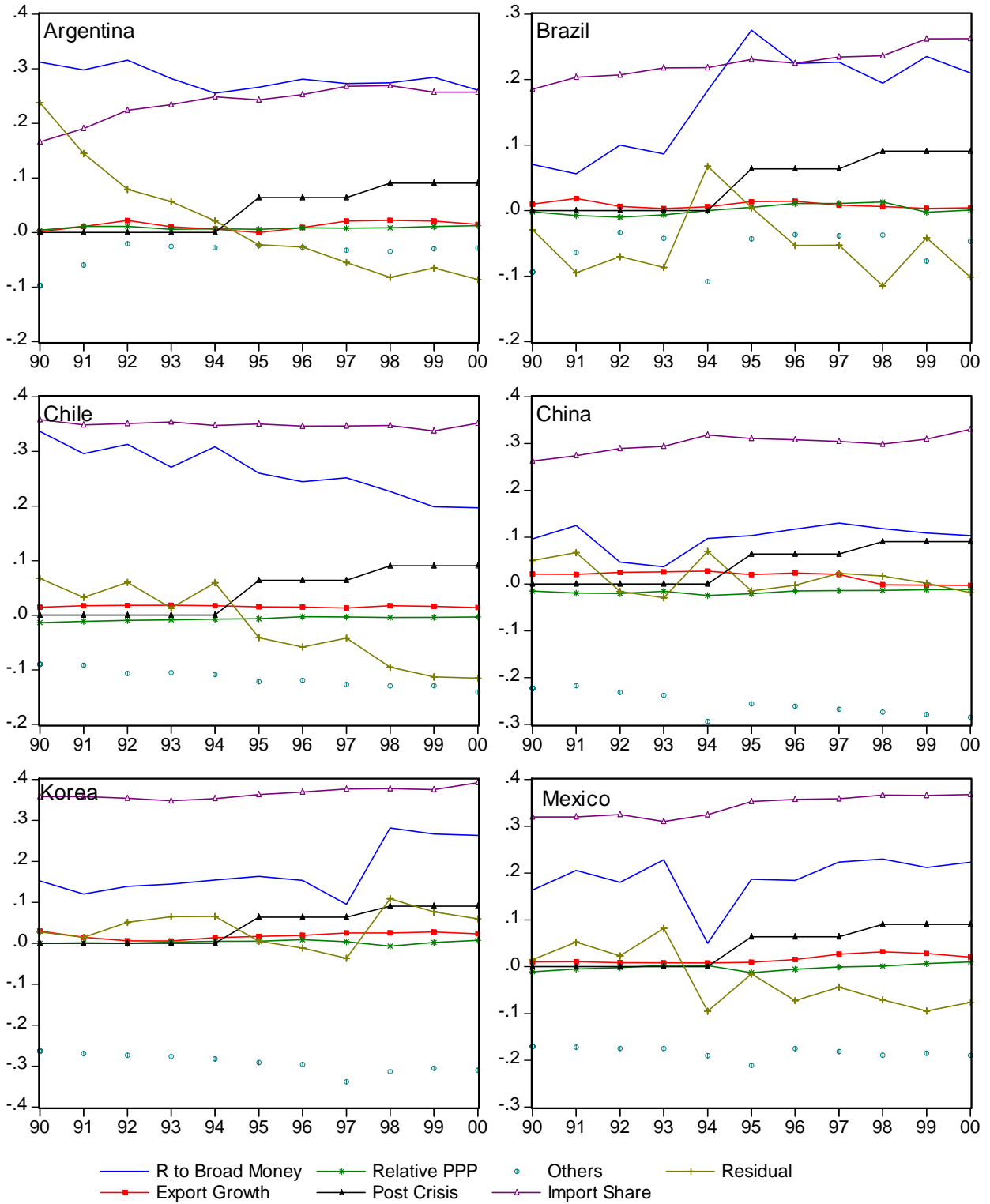


Figure 2. Reserves to GDP

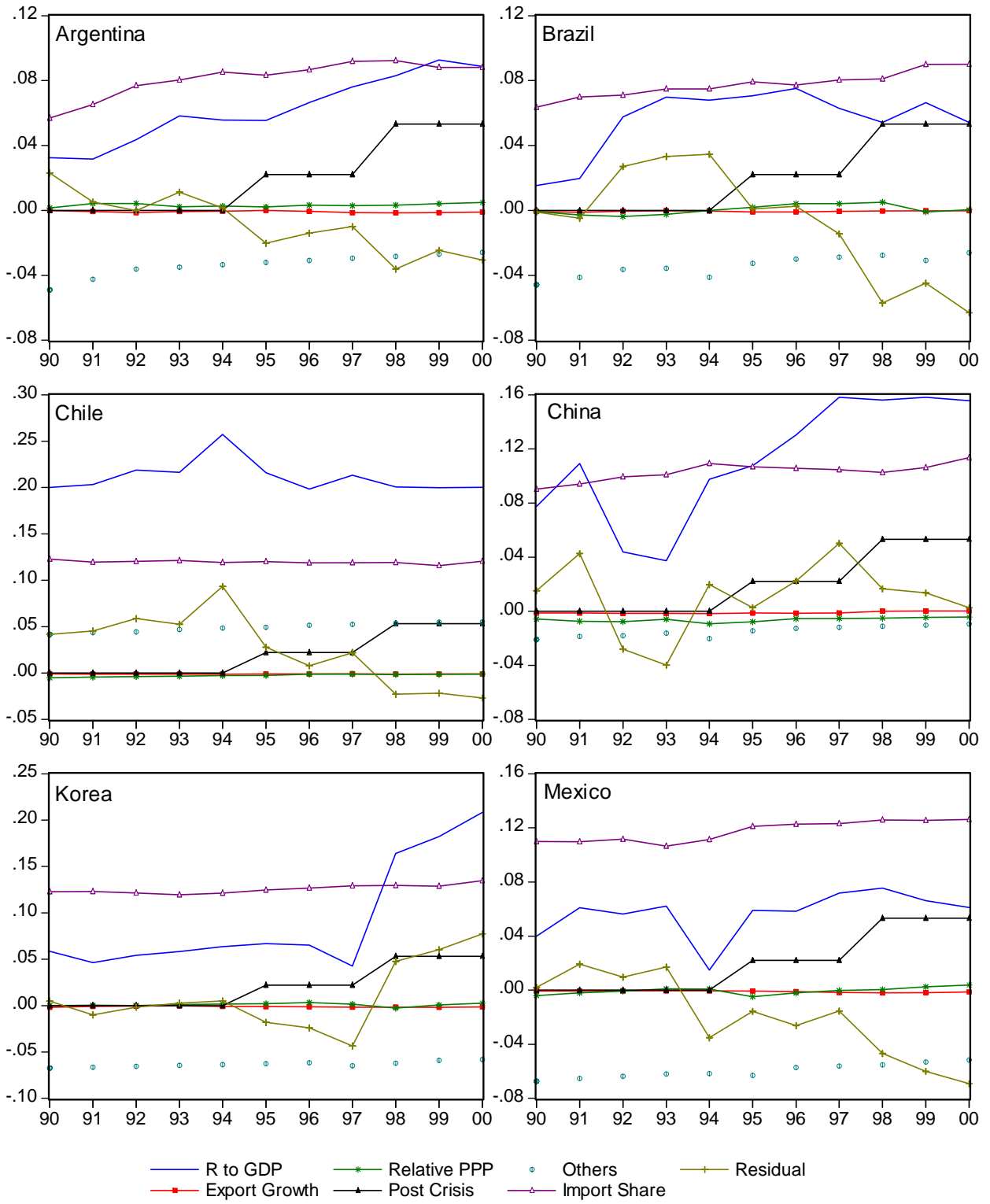


Figure 3. Country specific effects

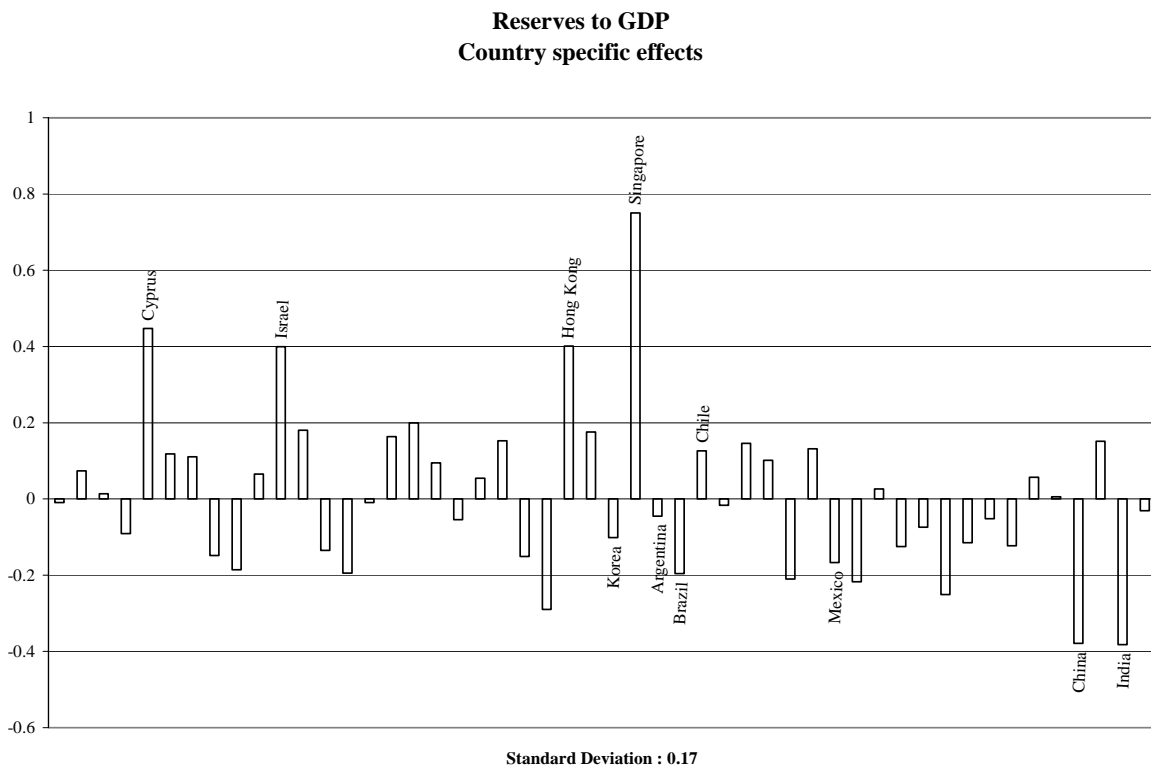
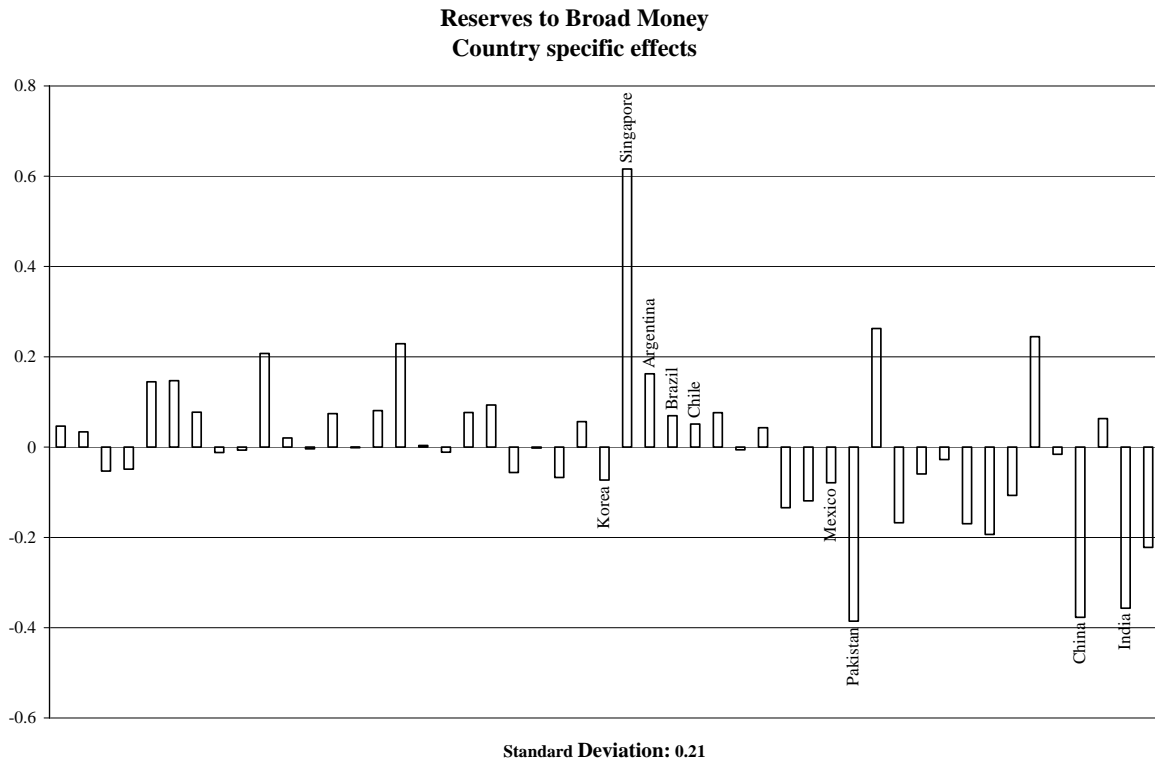
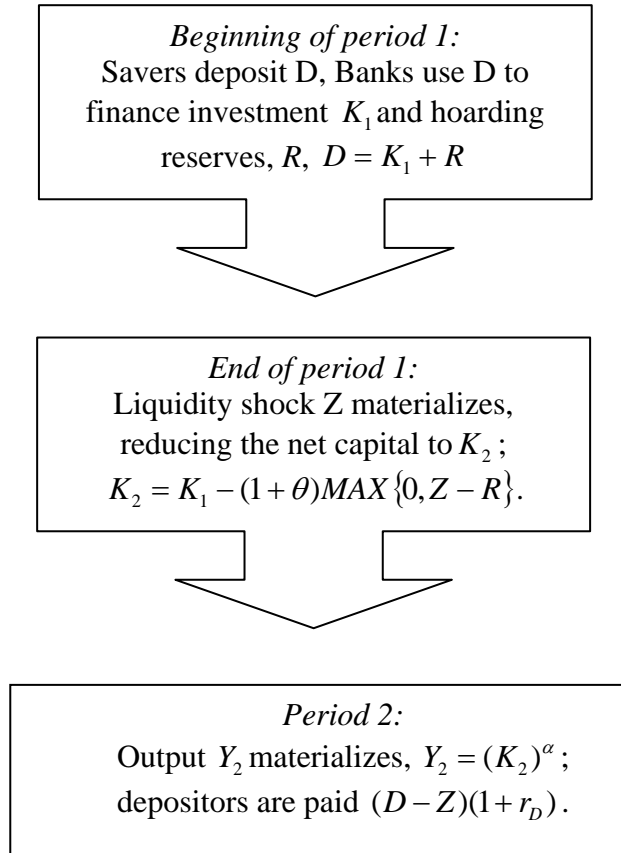


Figure 4:
The time line



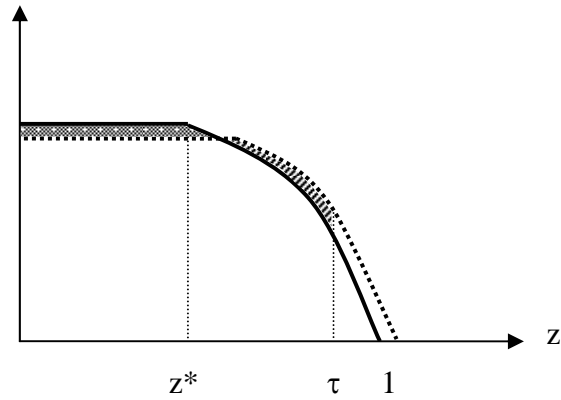


Figure 5
Liquidity shocks, reserves deposit ratio and output

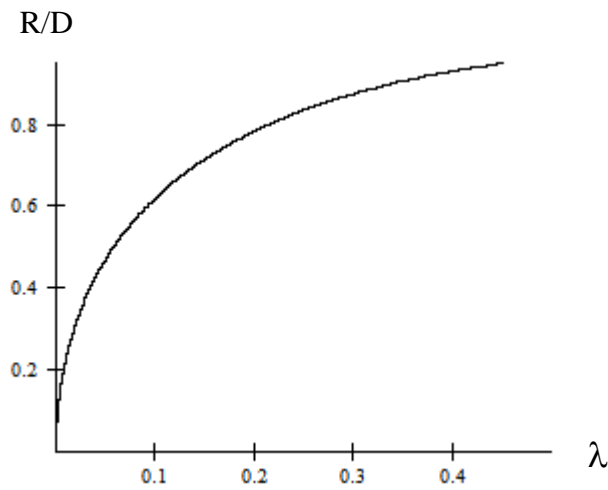


Figure 6
Volatility and R/D ratio, constant D.
The simulation values are $\alpha = 0.33$; $\theta = 0.5$; $\rho = 0.2$; $r_f = 0.02$; $D = D_0^* = 0.15$